



**Rangitāiki-Tarawera Rivers Scheme Liaison Group Meeting  
to be held in Committee Meeting Room 1,  
Bay of Plenty Regional Council's Whakatāne Office  
on Wednesday, 8 March 2017 commencing at 11:00 am**

- 1 Welcome and Introduction
- 2 Apologies
- 3 Previous meeting notes 9 November 2016
- 4 Integrated Catchment Management
- 5 Financial Report
- 6 Works and Flood Damage Report
- 7 Rangitaiki Floodway Project Update
- 8 Terms of Reference for the Rangitaiki-Tarawera Rivers Scheme Advisory Group
- 9 Other Business



# Minutes of the Rangitāiki-Tarawera Rivers Scheme Liaison Group meeting held in CMR1, Bay of Plenty Regional Council, 5 Quay Street, Whakatāne, on Wednesday, 9 November 2016 commencing at 11.00 am

---

<b>Chair:</b>	Cr Norm Bruning
<b>Scribe:</b>	Cleo Hanlon
<b>Liaison Group:</b>	Colin Holmes, Scottie Muir, Dave Wright and Linda Conning
<b>BOPRC:</b>	Chair Doug Leeder, Cr Bill Clark, Chris Ingle, Bruce Crabbe, Roger Waugh, Tony Dunlop, Andy Dixon, Mark Townsend & Simon Stokes
<b>Visitors:</b>	Bill Healey
<b>Apologies:</b>	Monty Ramanui

---

## Tabled Items

- 1 Rangitāiki-Tarawera Rivers Scheme – Gravel Extraction Quantities 2014 to 2016 (location).

### 1 **Welcome and Introduction**

Cr Bruning opened the meeting and introduced Chris Ingle to the group.

### 2 **Apologies**

Apologies were received from Monty Ramanui, and Linda Conning for lateness (arrived 11.05 am).

### 3 **Previous meeting notes 9 March 2016**

The previous meeting notes were accepted as a true and correct record.

### 4 **Integrated Catchment Management**

Simon Stokes introduced himself to the group and explained his role as Eastern Catchments Manager, and specifically within the Rangitāiki catchment with the Rangitāiki River Forum. He continued by providing an overview of work happening in the Rangitāiki Catchment, and provided a copy of the Rangitāiki Catchment Programme Annual Work Plan 2016/17 which outlines the various projects and business as usual work in Rangitāiki Catchment.

Simon advised that there are approximately 56kms of waterways up for protection during the financial year, mainly in the Whirinaki catchment.

The group was advised that some of the work BOPRC is doing with farmers under the riparian or biodiversity programmes is focused on wetlands as there are many benefits in focusing on that type of landscape, for water quality and quantity improvements, and other benefits.

Other major projects include:

- Working with Ngāti Manawa on the Kani Rangi Park development.
- Lake Aniwhaniwa (Aniwhenua) – has had some great work done over the previous 18 months in conjunction with the local community, however needs a plan for the long term.
- Te Hekenga Nui o Te Tuna (the Tuna Plan) has been recently approved, and the actions from this plan are being put into place now. Eel passage past the dams was a focus and biodiversity and riparian work also works in with this plan.
- A Freshwater Futures workshop was held yesterday, which has membership overlap with the Liaison Group.

There was discussion around the work coming from co-governance forums and the Freshwater Futures Groups. This work will then feed into the Regional Policy Statement (RPS), mainly through Plan Change 3, and the importance of the liaison group being aware of these activities.

It was highlighted that Proposed Change 3 whereby Te Ara Whanui o Rangitāiki – the river strategy is open for submission now, closing 23<sup>rd</sup> November 2016. The Freshwater Futures project has another 18 months to 2 years to run (Plan change 12) which closes on the 14<sup>th</sup> December 2016.

There was more discussion around submissions being made on Proposed Change 3 from the point of view of the scheme ratepayers, and in particular to draw attention to the unnaturalness of peaking.

## **MOTION**

**Develop a submission on RPS Change 3 representing the interests of this group.**

**Holmes/Muir**

There was a request from the scheme members to have better access to upcoming work and events, with supporting science and data, and information that is being provided to the community liaison groups need to be available to all in the community. A website link for the Freshwater Futures Group, Rangitāiki Area, will be sent to all members of this group.

## **5 Financial Report**

The financial report for the financial year ending 30 June 2016 was presented by Roger, with the following key points raised:

- Other Revenue was \$139k higher as there were two contributions from TrustPower..



- Other Expenses was \$15k overspent, which was mainly made up of consultants expenditure for the Consent Forward Planning process.
- Contract Work was \$85k overspent due to Galatea streams gravel removal, and erosion repair works.
- Finance Costs were \$198k underspent due to interest rate savings (budgeted 4%, actuals 2.88%).
- Overall, the expenditure was \$94k underspent.
- Capital Expenditure is \$37k overspent on the Floodway Project.
- Reserve Balances:
  - Flood damage reserve - \$2,138,469
  - Asset Replacement Reserve - \$0
  - Works Reserve - \$335,336
  - General Reserve – \$83,834
  - Outstanding Loans - \$20,512,033
  - Rangitāiki-Tarawera Asset Valuation 1 July 2105 - \$78,874,093

The financial report for the Quarter Ending September 2016 was presented by Roger, with the following key points raised:

- Contract Work is underspent to date mainly due to rock supply issues.
- Expenditure overall is about \$100k underspent but expected to be over at year end resulting from the flood damages of the June 2016 event
- Capital Expenditure: this is mostly made up of the Floodway Widening Project
- Reserve Balances:
  - Flood damage reserve - \$2,150,321
  - Asset Replacement Reserve - \$0
  - Works Reserve - \$335,336
  - General Reserve - \$83,834
  - Outstanding Loans - \$20,512,033
  - Rangitāiki-Tarawera Asset Valuation 1 July 2015 - \$78,874,093

## 6 Works Report

Tony presented a PowerPoint presentation covering the recent flood events and damage, along with a fly-over video of the river.

The Works Plan was also presented. Tony noted the February floods adversely affected various streams and the main rivers with flood damage repair estimates being approximately \$530k. \$80k has been spent already on opening up the Galatea streams, \$230k estimated for Rangitāiki River and \$100k for Tarawera River. Inspection of the Horomanga River is showing a lot of damage and gravel build up.

Discussion was held regarding options for funding the flood repair works including annual flood allowances, flood reserves and scheme working balances.

## **7 Capital Works and Rangitāiki Floodway Project**

Mark explained the Floodway widening work stages and programming. He also advised that the current year capex projects consisting of Olsen/Fraser Canal widening section, Frasers Bridge replacement and Hammond's section wicks installation works were underway or programmed to commence soon. Design works and planning is also underway for Van den Top's canal bifurcation involving significant consultation with affected landowners and Iwi etc. The current focus for side spilling is locating it upstream of SH2 which is upstream of the influence of tidal fluctuations.

The Spillway works are programmed for 2019/20 with three design options:

1. The rubber dam (the consented option), estimated at \$5.1m
2. Tilt slabs, estimated at \$1.16m
3. Construction of a wider fixed-weir spillway similar to the current design at \$0.7m

2017/18 is when BOPRC expect to go out to community for feedback on these three options and there has been interest expressed by this group and Federated Farmers.

The Liaison Group raised questions around programming of the Floodway stages and potential for accelerating the works to reinstate the flood protection system more quickly. Mark explained that these options had been explored and reported to Council previously and the resulting programme adopted in the Long Term Plan. He advised that options being explored to side-spill floodwater and optimise the Spillway design require a resource consent variation that has consultation and RMA process constraints and staff believe the existing programme of work is realistic.

Discussion was held regarding spilling options, level of control and associated frequency of use of the Floodway.

Mark advised that further information and recommendations will be brought to a future meeting.

## **8 Other Business**

### **8.1 Noe Stopbank**

Mark Townsend provided the group with an update on the Noe stopbank situation. He advised that 500m of stopbank was removed approximately a year ago, and the agreement was that further removal work would be undertaken by the landowner between January – March 2016. This work was not carried out so BOPRC are continuing discussions with the landowner.

Bill Healey attended the meeting to communicate the affect this stopbank is having on his farm, and that he would like to see a quick resolution. Bill advised that he sometimes experiences flood water on his farm for up to 14 days.

Mark advised that hand calculations show that the remaining section of stopbank is having a less than minor effect which means the work can be a permitted activity.

There was discussion around the effects on Bill's farm and relevant regional plan rules and permitted activities.

Bill requested a list of the relevant earthworks rules and permitted activities. Chris suggested that Bill could pursue the matter himself through the Civil Court. It was agreed that Chris and Mark would meet with Bill on site for further discussions.

Members expressed concern that rules may have been broken and there does not seem to be any enforcement action taken.

## **8.2 Lake Aniwanuiwa Update**

At the previous meeting, Graeme O'Rourke presented photos of the Lake and effects of the dam. There was concern that the waterway into the dam has been choked up with gravel, affecting the capacity for water to flow down the upper Rangitāiki River and causing flooding.

Mark advised that several cut excavations had been carried out, partly funded by the dam owner, but these had all been relatively short lived with gravel returning from upstream.

Discussion was held regarding other options including an overflow channel under Kopuriki Road to increase flow into the top end of the dam. These options have been scoped for further investigation and it was suggested the Liaison Group may make a submission to the Annual Plan to show support for this work.

## **8.3 Feasibility Study for Combined Flood Control and Irrigation in the Upper Rangitāiki Catchment**

Mark advised that the BOPRC Water Board engaged Aecom to investigate options, and they have produced a draft report. He advised that there are some matters requiring further work before it is completed and permission is required from the Water Board before releasing to other parties.

It was pointed out that although the Council funded the budget, it was an exercise that arose from a partnership. It was asked if a representative from the irrigation committee could attend the Water Board meeting. It was agreed to note this request, and a copy of the report would be made available once the Water Board approved its release.

## **8.4 Gravel Management**

Roger Waugh provided an update of gravel extraction quantities (refer tabled item). He noted that all of the extractions in the reporting period have come from the Galatea streams. Where possible commercial operations are granted allocations, however many of the sections requiring urgent attention following the two heavy rainfall events are contaminated with woody debris that can make it unsuitable for commercial operators. The scheme has funded approx. \$80k for opening up congested sections and most of this material has been placed on the stream banks as it has no alternative use.

Surveys have been completed for these streams, and in some cases there is 3-4 metres of gravel accumulation.

## 8.5 Loan Funding Discussion

Colin Holmes asked what progress had been made re locking in long term fixed interest rate loans for the scheme. Andy Dixon advised that a report had been considered by an Audit and Risk Committee workshop. The conclusion was that internal interest rates were still more favourable than external rates so scheme loans would continue to be internally funded for the current time with external interest rates being monitored closely.

Andy advised that the scheme could get 3.4% interest funding for five years from the Local Government Funding Authority. Colin felt that if the scheme could get 3.4% for five years funding then they would take it. An update was requested for the March Liaison Group meeting.

## 8.6 Water Management Areas

Colin recommended that the Rangitāiki water management area be split at Matahina Dam and that their upper catchment community would like to be in control of their own area.

Scottie requested a financial report showing a comparison of rates contribution compared with maintenance/operating costs for the scheme area upstream of Matahina Dam. It was agreed to report back with this information to the March Liaison Group meeting.

**Meeting ended: 2.40pm**



# Submission Form

Send your submission to reach us by  
**4:00 pm on Wednesday, 23 November 2016**

Submission Number  
*Office use only*

<b>Post:</b> The Chief Executive Bay of Plenty Regional Council PO Box 364 Whakatāne 3158	<b>or Fax:</b> 0800 884 882	<b>or email:</b> rps@boprc.govt.nz
--	-----------------------------	------------------------------------

**Submitter Name:** Rangitāiki-Tarawera Rivers Scheme Liaison Group and Rivers and Drainage Staff submission)

This is a submission on **Proposed Change 3 (Rangitāiki River) to the Bay of Plenty Regional Policy Statement.**

- 1 I could not gain an advantage in trade competition through this submission.
- 2 The details of my submission are in the attached table.
- 3 I am still to confirm my wish to be heard in support of my submission.
- 4 If others make a similar submission, I will consider presenting a joint case with them at a hearing.

[Signature of person making submission or person authorised to sign on behalf of person making submission.]  
[NOTE: A signature is **not** required if you make your submission by electronic means.]

\_\_\_\_\_ Date

**Address for Service of Submitter:**

Bay of Plenty Regional Council, PO Box 364, Whakatāne

**Telephone:**

**Daytime:** 0800 884 880

**After Hours:** 029 3689519

**Email:**

roger.waugh@boprc.govt.nz

**Fax:**

**Contact person:** [Name and Designation if applicable]

Roger Waugh : Programme Leader (Rivers and Drainage)

**NOTE:** If you are a person who could gain an advantage in trade competition through the submission, your right to make a submission may be limited by Clause 6(4) of Part 1 of Schedule 1 of the Resource Management Act 1991

BOPRC ID: A2445641

## SUBMISSION POINTS:

The specific provisions of Proposed Change 3 that my submission relates to are:		My submission is: [include: • whether you support or oppose the specific provisions or wish to have them amended, and • reasons for your views]	I seek the following decision from the local authority:	
Page No	Reference (e.g. Policy, Method or Objective number)	Support/Oppose/ Seek amendment	Reasons	Decision Sought Say what changes to Proposed Change 3 you would like
21	Objective 3, Policy RR3B, Method 23I Method 23L	Seek Amendment	<p>The objective of this method is to restore water quality in the Rangitāiki Catchment. Method 23I aims to develop sustainable environmental flow and load limits. The ecological health in the downstream from Edgecumbe and the Te Teko reach has been assessed as poor. This health has been developed by measuring different parameters such as:</p> <ol style="list-style-type: none"> <li>1. Water quantity (including the flow, volume and it's variability)</li> <li>2. Water quality (including nutrients, sediment loads or turbidity, the amount of bacteria in the water, and conductivity.</li> <li>3. Ecology (including plants, invertebrates and fish)</li> </ol> <p>Flow variability and erosion are significant issues that lead to a decline in river health. There is no inclusion of flow variability limits expressly included in Method 23I of the proposed plan change. This links to Method 23L, as a pressure and opportunity to restore water quality in the Rangitāiki River catchment and potentially Method 23M to establish cultural health indicators for the Rangitāiki Catchment.</p>	Amend Method 23I to:  Develop sustainable environmental flow, <b>flow variability</b> , and catchment load limits.
32	Objective 4, Policy WQ2A Policy WQ3B Method 23I Method 23L Method 23M			
23	Objective 7, Policy MN1B, Policy MN7B, Policy MN8B Method 23R	Support	That existing matters of national importance, using criteria to assist in assessing inappropriate development and managing effects of subdivision, use and development is the appropriate policies to manage natural features and landscape values of the Rangitāiki River Catchment.	That policies MN1B, MN7B and MN8B be maintained with no deletion, amendment or additional policies added.
All	All other Objectives, Policies and Methods	Support	The Rangitāiki – Tarawera Rivers Scheme support all other objectives, policies and methods as notified in the Proposed Plan change 3 (Rangitāiki River) to the Bay of Plenty Regional Council Policy Statement.	No changes or additions to the plan change as notified. The Rivers & Drainage section and Liaison Group request to be included in all changes through the submission and hearing process that could potentially affect the Rangitāiki Tarawera Rivers Scheme

# Further Submission

Clause 8 of Schedule 1, Resource Management Act 1991

Further Submission Number  
*Office use only*

Please send your submission to be received by **4:00 pm on Wednesday 15 February 2017**

**TO:** The Chief Executive  
Bay of Plenty of Regional Council  
PO Box 364  
Whakatane 3158

**FAX:** 0800 884 881

**EMAIL:** rps@boprc.govt.nz

**Name: Rangitaiki – Tarawera Rivers Scheme Liaison Group and Rivers and Drainage Staff**  
*[Full name of the person or organisation making the submission]:*

## This is a further submission in support of or opposition to a submission on Proposed Change 3 (Rangitaiki River) to the Regional Policy Statement

1. I **do** or ~~do not~~ wish to be heard in support of my further submission.  
*[Delete as required]*
2. If others make a similar submission I **would** or ~~would not~~ be prepared to consider presenting a joint case with them at any hearing.  
*[Delete as required]*
3. I am:-  
*[Please tick one]*

✓ a person representing a relevant aspect of the public interest. *(Specify upon what grounds you come within this category.)*  
✓ a person who has an interest in the proposal that is greater than the interest the general public has. *(Specify upon what grounds you come within this category.)*

On the following grounds:

The Scheme Liaison Group and Scheme Managers represent the targeted ratepayers of the Rangitaiki Catchment for the purposes of managing and running the flood protection and drainage scheme.

**Signature** *[of person making submission or person authorised to sign on behalf of person or organisation making submission.*  
*A signature is not required if you make your submission by electronic means]*

**Address for Service** *[Provide full postal details]:*

**Telephone:**

**Email:**

**Contact person** *[Name & Designation if applicable]:*

**Bay of Plenty Regional Council PO Box 364 Whakatane**

**Daytime:** 0800 884880

**Cell:** 029 3689519

roger.waugh@boprc.govt.nz

**Fax:**

*Roger Waugh Programme Leader (Rivers and Drainage)*

Note: A copy of your submission must be served on the original submitter within 5 working days after making this further submission

## FURTHER SUBMISSION POINTS:

<b>Submission Number</b> [Submission number of original submission as shown in the "Summary of Decisions Requested" report]	<b>Submitter Name</b> [Please state the name and address of the person or organisation making the original submission as shown in the "Summary of Decisions Requested" report]	<b>Section Reference</b> [Clearly indicate which parts of the original submission you support or oppose, together with any relevant provisions of the proposed plan change]	<b>Support/Oppose</b>	<b>Reasons</b> [State in Summary the nature of your submission giving clear reasons]
16-34	Trustpower Limited	Policy RR 3B	Oppose	<p>The adverse effects of erosion, silt and sediment on the environment is well documented. Some soils of the Rangitāiki Catchment are very susceptible to fluvial erosion therefore it is important that accelerated erosion is avoided and that mobilised sediment does not adversely affect water resources or ecosystems.</p> <p>Relief Sought: Reject the submission</p>
16-35	Trustpower Limited	AER Values	Support	<p>The Scheme supports the inclusion of economic values to be maintained in the list of values.</p> <p>Relief Sought: Accept the submission</p>
16-10	Trustpower Limited	Objective 7	Oppose	<p>Outstanding Natural Features and Landscapes are matters identified and assessed under criteria of section 6 of the RMA.</p> <p>Additional policies to address the maintenance of natural features and landscapes within the Rangitāiki Catchment not identified under section 6 of the RMA will become subjective and inconsistent with other parts of the Bay of Plenty Region.</p> <p>Relief Sought: Reject the submission</p>

Note: A copy of your submission must be served on the original submitter within 5 working days after making this further submission



13-3	Galatea-Murupara Irrigation Society	Policy RR4B	Support	<p>This proposed amendment is consistent with the intent of our submission 11-1.</p> <p>Relief Sought: Accept the submission</p>



**Rangitāiki Tarawera Rivers Scheme Reaches 4,5, and 6 (Rangitāiki River upstream of Matahina) Expenditure and Funding Analysis**

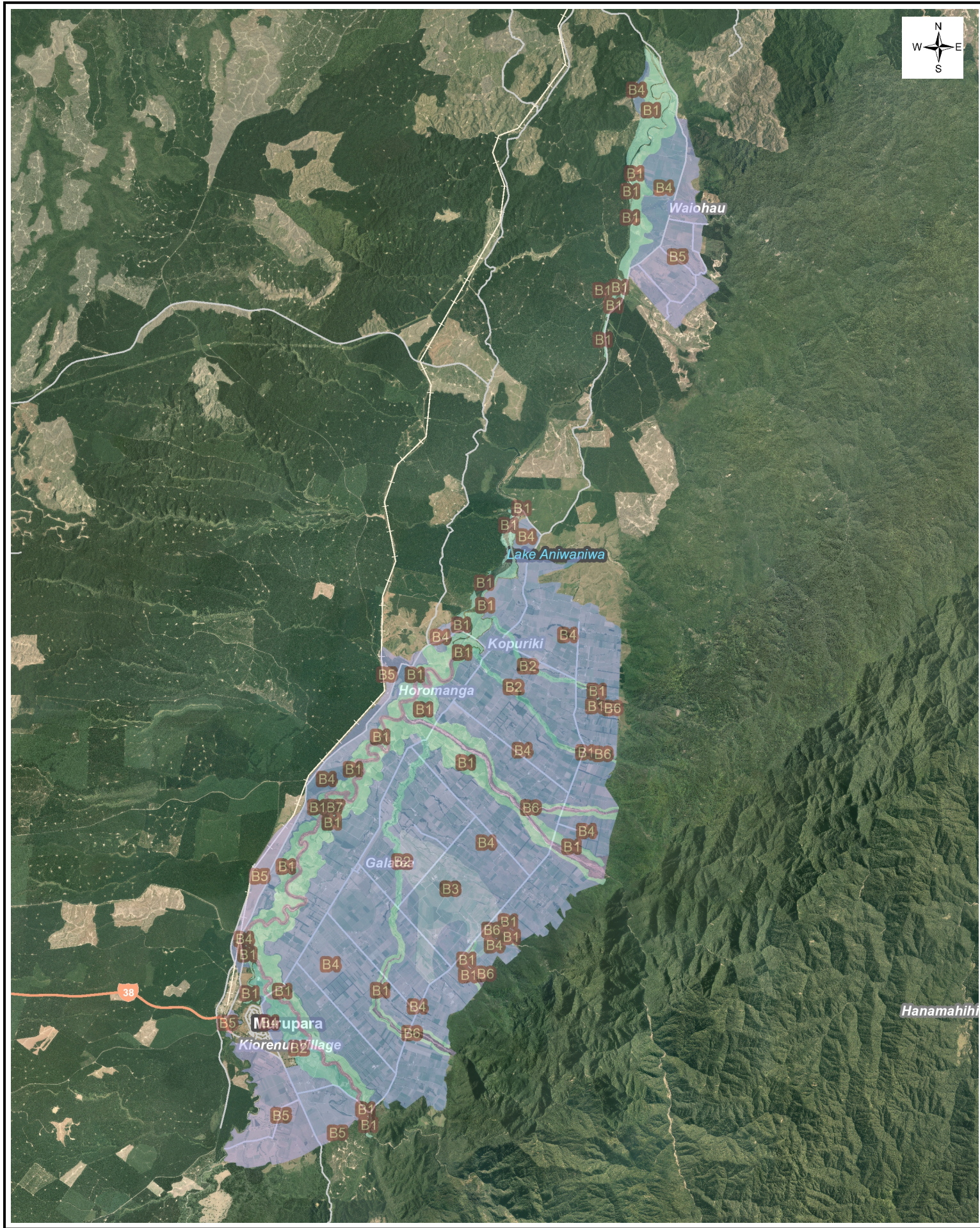
Expenditure Reaches 4,5, and 6 (excludes admin expenditure)		2011-2012	2012-13	2013-14	2014-15	2015-16	2016-17
Maintenance		\$86,485	\$44,711	\$67,793	\$185,425	\$190,640	
Capital		\$68,946	\$163,505	\$0	\$41,163	\$7,353	
<b>Combined Expenditure</b>		<b>\$155,431</b>	<b>\$208,216</b>	<b>\$67,793</b>	<b>\$226,588</b>	<b>\$197,993</b>	<b>current year</b>
Expenditure All Reaches (excludes admin expenditure)		2011-2012	2012-13	2013-14	2014-15	2015-16	2016-17
Maintenance		\$546,755	\$668,763	\$763,683	\$513,410	\$638,171	
Capital		\$6,200,042	\$4,158,213	\$5,412,951	\$2,670,722	\$2,091,527	
<b>Combined Expenditure All Reaches</b>		<b>6,746,797</b>	<b>4,826,976</b>	<b>6,176,634</b>	<b>3,184,132</b>	<b>2,729,698</b>	<b>current year</b>
<b>Maintenance Expenditure Reaches 4,5 and 6 c/w All Reaches (%)</b>		<b>15.8%</b>	<b>6.7%</b>	<b>8.9%</b>	<b>36.1%</b>	<b>29.9%</b>	<b>19.5% mean</b>
<b>Combined Expenditure Reaches 4,5 and 6 c/w All Reaches (%)</b>		<b>2.3%</b>	<b>4.3%</b>	<b>1.1%</b>	<b>7.1%</b>	<b>7.3%</b>	<b>4.4% mean</b>

<b>Funding</b>	2011-2012	2012-13	2013-14	2014-15	2015-16	2016-17
<b>Rate Funding Reaches 4, 5 and 6 (Note 1)</b>	\$245,939	\$379,526	\$463,056	\$458,588	\$445,448	\$459,315
<b>Rate Funding All Reaches (Note 1)</b>	\$1,277,369	\$1,982,593	\$2,373,571	\$2,346,827	\$2,284,554	\$2,341,059
<b>Funding Reach 4,5 and 6 c/w All Reaches (%)</b>	19.3%	19.1%	19.5%	19.5%	19.5%	19.6%
<b>Funding Reach 4,5 and 6 c/w All Reaches (%)</b>						<b>19.4% mean</b>

Note 1: excludes Classes C3,C4,C5, (forest: exotic and native)







## Waiohau - Galatea 'B' Class Rating

SCALE 1: 150,000

Projection: NZGD\_2000\_New\_Zealand\_Transverse\_Mercator



Date Printed:  
22 February 2017





# Detailed Activity Report by Sub activity: Rangitaiki-Tarawera Rivers Scheme

Revenue and Expenditure for the period ended 31 January 2017

		July-January		2016/17	
		Budget	Actual	Variance	
		\$000	\$000	\$000	\$000
<b>Operating revenue by class</b>					
1	Targeted rates	1,363	1,363	0	-
2	External interest income	50	32	18	Lower
3	Other revenue	0	4	(4)	Higher
4	Fees and charges	0	0	0	-
5	General Funds	394	394	0	-
	<b>Total operating revenue by class</b>	<b>1,807</b>	<b>1,793</b>	<b>14</b>	<b>Lower</b>
					<b>0</b>
<b>Expenditure by class</b>					
6	Administration expenses	6	3	(3)	Underspend
7	Other Expenses	143	102	(42)	Underspend
8	Consultancy fees	0	0	0	Overspend
9	Contract work	230	237	7	Overspend
10	Finance Costs	572	315	(258)	Underspend
11	Depreciation and Asset Disposal	103	110	7	Overspend
	<b>Expenditure (before charges and recoveries)</b>	<b>1,055</b>	<b>766</b>	<b>(288)</b>	<b>Underspend</b>
					<b>(8)</b>
<b>Overhead charges and recoveries</b>					
12	<b>Net overhead charges and recoveries</b>	<b>446</b>	<b>421</b>	<b>(25)</b>	<b>Lower</b>
					<b>0</b>
	<b>Total operating expenditure</b>	<b>1,501</b>	<b>1,188</b>	<b>(313)</b>	<b>Underspend</b>
					<b>(8)</b>
13	<b>Net (surplus) deficit</b>	<b>(306)</b>	<b>(605)</b>	<b>(300)</b>	<b>(1,020)</b>
					<b>(8)</b>
14	<b>Total capital expenditure</b>	<b>1,673</b>	<b>682</b>	<b>(992)</b>	<b>Underspend</b>
					<b>(800)</b>

## Reserve Balances: as at 31 January 2017

15	Flood Damage Reserve	
16	Asset Replacement Reserve	\$2,170,333 Credit
17	Works Reserve	0
18	General Reserve	\$172,336 Credit
		\$43,084 Credit
19	Outstanding Loans	
20	Rangitāiki - Tarawera Asset Valuation 1 July 2015	<del>\$20,021,283</del> debit
		\$78,874,093 Replacement Cost

### Budget to Forecast Variance explanations

#### Operating variances

7 Other Expenses  
9 Contract work

Infrastructure insurance has been re-negotiated to a rate below the budgeted amount.  
Contract work is currently on budget. Additional flood damage caused by the June 2016 event will be repaired during 2016/17. Council approval for the additional expenditure has been received and the work will be funded from existing budgets and reserves if required.

10 Finance Costs

Budgeted at an interest rate of 4.0% per market expectations and external advice. Actuals currently are 2.10% as the Official Cash Rate is currently sitting at a record low. The forecast underspend is \$381k.

13 Net (Surplus) Deficit

Operating expenditure is majority funded by 80% targeted rates and 20% general funds. Flood damage budget underspend is transferred to the flood damage reserve, then the remaining will be 80% transferred to the Works Reserve and 20% to Council's general reserve.

#### Capital variances

14 Rangitāiki Floodway widening - Stage 3

The project has been reviewed and expenditure of \$800k has been deferred to the 2017/18 year.

#### Reserves

15 Flood Damage Reserve  
16 Asset Replacement Reserve  
17 Works Reserve  
18 General Reserve

Contingency cash held for flood damage works, currently held on term deposit.  
Available to fund capital spend of renewals and new assets.  
Available to fund operating expenditure.  
20% general funds from net surplus.



**Progress Maintenance Works Report Rangitāiki Tarawera Rivers Scheme - 2016-2017 March 2017**

Date:13/11/2016	Reach	Work Type	Location	Annual Cost	Status
<b>Lower Rangitāiki</b>					
<b>Mouth to Matahina</b>					
		<b>Riverbank Weedspraying</b>		<b>\$9,100</b>	
	R1	Fonterra,East Pac,BOPRC	L/R 11.0		Completed
	R1	Various FD Sites	L&R/B		Ongoing
	R1	S/Bank-Gorse,B/Berry	L&R/B		Completed
	R1	Monks - Mānuka Site	R/B		ongoing
	R2	Fraser- Gorse	L/B 12.9-17.6		Completed
	R2	Various FD Sites,willow gorse,B/Berry	L&R/B		Completed
	R2	Stopbank spraying Gorse,B/Berry	L&R/B		Completed
	R2	Warbricks Regen gorse	R/B 15.1-16.7		Completed
	R2	Ngatiawa Farms Gorse Regen	R/B 17.7-19.3		Completed
	R2	Fraser- Regen Gorse	L/B 14.1-15.6		Completed
	R3	Various F/D Sites,Willow,gorse,B/Berry	L&R/B		ongoing
	R3	Various Mulching sites	L&R/B		Ongoing
		<b>Layering</b>		<b>\$9,973</b>	Planning
		<b>Tree Clearing</b>		<b>\$15,538</b>	
	R1	Checkleys	LB 6.2		March/April
		<b>Tree Mulching</b>		<b>\$14,398</b>	
	R1	Byford	R/B 3.4-3.7		March /April
		<b>Planting</b>		<b>\$20,997</b>	
	R123	Various sites, release			May/June
		<b>Rock/Rubble</b>		<b>\$275,727</b>	
	R1	<b>Thornton Beach Rd</b>	LB 1.8-2.0		March/April
		<b>Fencing</b>		<b>\$20,630</b>	
	<b>R1</b>	Van Den Tops	L/B 0.7- 2.0		March
<b>Stopbanks</b>		<b>Minor floodgates Inspection</b>		<b>\$1,728</b>	ongoing
		<b>Stopbank Miscellaneous Maintenance</b>		<b>\$6,700</b>	ongoing
	R1,2,3	<b>Pest Control</b>	Various		ongoing
<b>Upper Rangitāiki</b>					
<b>Waiohau Valley Upstream</b>					
	R 4	<b>Channel /Riverbank Weed Spraying</b>		<b>\$13,805</b>	
	R4,6	Ohutu,Jones Wash Hikurangi,Mangamate,Waikokopu	Various		In Progress
		<b>Riverbank Weedspraying</b>		<b>\$11,825</b>	
	<b>R6,7</b>	Horomanga, Whrinaki	Various		In progress
		<b>Layering</b>		<b>\$23,505</b>	
	<b>R6</b>	Horomanga River	Various		March
		<b>Channel Maintenance</b>			
	R 5	Van Den Brooks	R/B 72.3		Completed
	<b>R6</b>	Ohutu Stream	0.0 to 0.8		Completed
	<b>R6</b>	Hikurangi Stream, Wettings	5.3-7.0		Completed
	<b>R6</b>	Horomanga River	Various		In progress
	<b>R 6</b>	Hikurangi Stream	L&R/B 1.7		Completed
	<b>R5</b>	Wilson's Mark	L/B 88.5		Completed
	<b>R5</b>	Ngatimanawa	L/B88.8		Completed
	<b>R7</b>	Bakers	R/B 3.2		Completed
	<b>R7</b>	Ngatimanawa	L/B 2.0		Completed
	<b>R7</b>	Bakers	R/B 2.7		Completed
	<b>R6</b>	Mangamati Stream	6.0 - 6.5		Completed
	<b>R5</b>	Mata Nuku	L/B 82.0		Completed
	<b>R5</b>	Trenberths	R/B 82.50		Completed
	<b>R5</b>	Trenberths	R/B 81.80		Completed
	<b>R5</b>	Nivans	R/B 80.9		Monitor
	<b>R5</b>	Allen	R/B 78.9		Completed
		<b>Tree Clearing/mulching/topping</b>		<b>\$70,549</b>	Planning

	R2	Various			
	R3	Various			
		<b>Planting/Trench Willows</b>		<b>\$49,483</b>	
	R5	Mata Nuku 50mts	L/B 82.45		Completed
	R5	Mata Nuku 40mt	L/B 82.0		Completed
	R5	Fort Galatea 20mts	L/B 80.8		Completed
	R5	Fort Galatea 20mts	L/B 79.4		Completed
	R5	Fort Galatea 50mts	L/B 79.8		Completed
	R5	Fort Galatea 50mts	L/B 78.9		Completed
		<b>Tree Burning</b>			
	R4	Wilsons	R/B 47.7		April
	R5	Healys	L/B 70.0		April
		<b>Rock/Rubble</b>		<b>\$34,641</b>	
		Ngāti Manawa			April/May
<b>Tarawera River</b>					
<b>Mouth to Kawerau</b>					
		<b>Riverbank Weedspraying</b>		<b>\$7,275</b>	March/April
		<b>Layering</b>		<b>\$4,943</b>	March/April
		<b>Tree Clearing</b>		<b>\$7,700</b>	
	R8	Herrings	L/B 7.35		April
		<b>Tree Mulching</b>		<b>\$7,135</b>	
	R8	Herrings 800mts	L/B 7.5		April
	R8	Verbickas 800mts	L/B 8.6		May
	R8	Verbickas 100mts	R/B 10.7		June
		<b>Planting</b>		<b>\$10,405</b>	June
	R3 & R4	Various			
		<b>Rock/Rubble</b>		<b>\$46,682</b>	Planning
	R8	Tarawera High School			
		<b>Fencing</b>		<b>\$1,139</b>	Ongoing
		<b>Pest Control</b>			ongoing
	R 8	Various			
<b>Stopbanks</b>	R 8	<b>Minor floodgates Inspection</b>		<b>\$864</b>	ongoing
		<b>Stopbank Miscellaneous Maintenance</b>		<b>\$2,500</b>	ongoing
<b>Reach 10 Canals, Awaiti, etc</b>		<b>Stopbank Miscellaneous Maintenance</b>			
	R10	Reids Central tree removal	L/B 8.4		Completed
<b>Old Rangitaiki Channel</b>		<b>Pump Inspection</b>		<b>\$1,794</b>	ongoing
<b>Pump Station - ORC</b>		<b>Pump six month Inspection</b>		<b>\$660</b>	completed
		<b>2.5 year maintenance</b>		<b>\$0</b>	
		<b>5 year maintenance</b>		<b>\$2,420</b>	
		<b>Ancillary maintenance</b>		<b>\$4,620</b>	
		<b>Electricity</b>		<b>\$2,000</b>	
<b>Floodgates</b>		<b>Floodgate Inspection</b>		<b>\$3,588</b>	ongoing
		<b>Awaiti pad maintenance</b>			
	R 1	<b>Floodgate Annual Inspection</b>		<b>\$396</b>	ongoing
		<b>Floodgate Desilting</b>		<b>\$320</b>	When required
	R 1	<b>Floodgate Miscellaneous Maintenance</b>		<b>\$3,000</b>	ongoing
	R 1	<b>Floodgate Ancillary Maintenance (Structure)</b>		<b>\$3,200</b>	
<b>Kope West</b>					
	R 10	<b>Riverbank Weedspraying</b>		<b>\$1,875</b>	ongoing
				<b>\$0</b>	
<b>Stopbanks</b>	R 1	<b>Minor floodgates Inspection</b>		<b>\$1,680</b>	ongoing
	R 1	<b>Stopbank Miscellaneous Maintenance</b>		<b>\$3,600</b>	ongoing
<b>Estimated Costs Works Only</b>				<b>\$696,394</b>	

PRIORITY OF DAMAGE REPAIRS — 2016-17

Rangitaiki Tarawera

- REACH
- 1 = Mouth to Edgecumbe

2 = Edgecumbe to Te Teko

3 = Te Teko to Matahina

4 = Waiohau Valley

5 = Aniwhenua to Murupara

6 = Galatea Plains

7 = Tarawera: Mouth to SH30

8 = Tarawera : Upstream SH30

REACH (Number)	SITE (Name)	LOCATION (Profile km)	BANK (L or R)	LENGTH (Of damage)	DAMAGE DESCRIPTION (Nature of damage )	PRESENT ASSETS	REPAIRS	ESTIMATE (\$)	Status	PRIORITY (Class)
R1	Fonterra	9.8	R	50	Bank Erosion	willow, VA,CU	RL	\$32,000	March/April	1 = Very High
R1	Fonterra	9.9	R	30	Bank Erosion	willow, VA,CU	RL	\$32,000	March /April	1 = Very High
R2	Moses	22.3	R	40	Bank Erosion	Rock,CU	RL	\$20,000	March /April	3 = Medium
R2	Ramanui	23	L	30	Bank erosion	willow, VA,CU	RL	\$20,000	March /April	3 = Medium
R3	Putuaki	28.3 & 28.5	R	180	Bank erosion	willow, VA,CU	RL	\$130,000	March /April	3 = Medium
R3	Penitito	28.7	R	120	Bank erosion	Rock,CU	RL	\$50,000	March /April	3 = Medium
R4	Wilsons	47.5	R	40	Rock Slumping	Rock,CU	RL	\$24,000	completed	3 = Medium
R5	Healey	71.3	L	100	Bank Erosion	willow, VA,CU	RF	\$40,000	completed	3 = Medium
R5	Ng's	72.2	L	120	Bank Erosion	willow, VA,CU	Tw/Pt	\$20,000	Monitoring	4 = Low
R5	Nivans	80.3	R	30	Bank Erosion	willow, VA,CU	Tw/Pt	\$10,000	completed	4 = Low
R5	Wilsons	88.3-99.9	R	150	Bank Erosion	willow, VA,CU	Tw/Pt	\$40,000	completed	3 = Medium
R5	Ngāti Manuwa	88.7	L	50	Bank Erosion	willow, VA,CU	Tw/Pt	\$15,000	Investigating	3 = Medium
R5	Ngāti Manuwa	89.5	L	60	High Bank Erosion	willow, VA,CD	RF	\$80,000	Planning	3 = Medium
R6	Ohutu Stream	Various	L&R		Channel Alignment	CD,VS	Re	\$12,000	completed	3 = Medium
R6	Ruarepuae	Various	L&R		Channel Alignment	CD,VS	Re	\$15,000	completed	3 = Medium
R6	Mangamate	1.55	L	30	Channel Alignment	CD, VS	Re	\$15,000	completed	3 = Medium
R6	Mangamate		L&R		Channel Alignment	CD,VS	Re	\$20,000	completed	3 = Medium
R6	Haumea	0.2	R	20	Bank Erosion	VA,CA	RL	\$8,000	completed	3 = Medium
R7	Murupara Ponds	0.5	L	30	Bank Erosion	willow, VA,CU	Tw/Pt	\$25,000	April/May	3 = Medium
R7	Muir's /Bridgemans	0.1	R	60	Bank erosion	willow,VA,CA	Tw/Pt	\$20,000	completed	3 = Medium
R7	Ngatimanuwa	2.7	L	30	Bank Erosion	willow, VA,CU	Tw/Pt	\$7,000	completed	3 = Medium
R7	Ngatimanuwa	3.2	L	30	Bank Erosion	willow, VA,CU	Tw/Pt	\$13,000	completed	3 = Medium
R8	Beelers	11.9	R	100	Bank Erosion		RF	\$40,000	March/April	2 = High
R8	Verbickas	9.75	R	50	Bank Erosion		RF	\$20,000	March/ April	2 = High
R8	Tarawera Park	33.5	L	50	Bank Erosion	Rock,CU	RF	\$40,000	in progress	3 = Medium
R8	Tarawera R Rail		L	30	Bank Erosion	Rock,CU	RF	\$15,000	Planning	2 = High
							Totals	\$763,000		

Funding Source	
Works Reserve	335,336
General Reserve	83,834
Maintenance Budget Flood Allowance	193,500
Maintenance Budget Diverted Works (rock and planting)	150,330
Total	763,000
Shortfall	0
Forecast additional expenditure above 2016/17 budget	419,170



# **BRIEFING NOTE**



**To:** Rangitāiki-Tarawera Rivers Scheme Liaison Group

**From:** Mark Townsend, Project Manager – Rangitāiki Floodway

**Date:** 28 February 2017

**Subject:** Rangitāiki Floodway Update

---

During the 2016/17 financial year the following works have been progressed:

- Frasers Bridge construction by Mahy Crane Hire for \$169,000 is now completed
- Floodway widening contract at Fraser's/Olsen's that was awarded to Doug Gerrand Earthmovers Ltd for \$678,410 is nearing completion. Expected completion is mid-March 2017.
- The drainage wicks installation contract being undertaken by Fulton Hogan Ltd for \$565,734 is two-thirds complete. Expected completion date is mid April 2017.
- The intended floodway widening downstream of Thornton Road bridge and the construction of a bifurcation at the confluence with the Rangitāiki River has gained agreement with affected parties. Some design details are being worked through with Whakatāne District Council Roading Engineers in regard to the optimal location for a new bridge that will span the bifurcation.
- Modelling work has commenced on quantifying the effects of the different spillway options. Various storm events will be run through the model to assess the inundation extent for each of the spillway options. This information will be utilised during consultation with affected parties in the 2017/18 financial year.
- A contract has been let to construct a new stock effluent tank on the Van den Top property. This will then enable the existing effluent ponds to be infilled. Once this is undertaken, overlays of low ground behind the Rangitāiki River stopbanks can be completed.

Scheduled work for 2017/18 financial year to a budget of \$3.88 million.

- Construct floodway widening and bifurcation on left bank of floodway below Thornton Road Bridge.
- Raise stopbank level on left bank of the floodway from Fonterra to Fraser's farm (boundary of recently completed Stage 1a works)
- Undertake consultation on spillway options
- Construct new pump station and drains on Van den Top farm